

ivf

TCO Development

IVL Swedish Environmental Research Institute

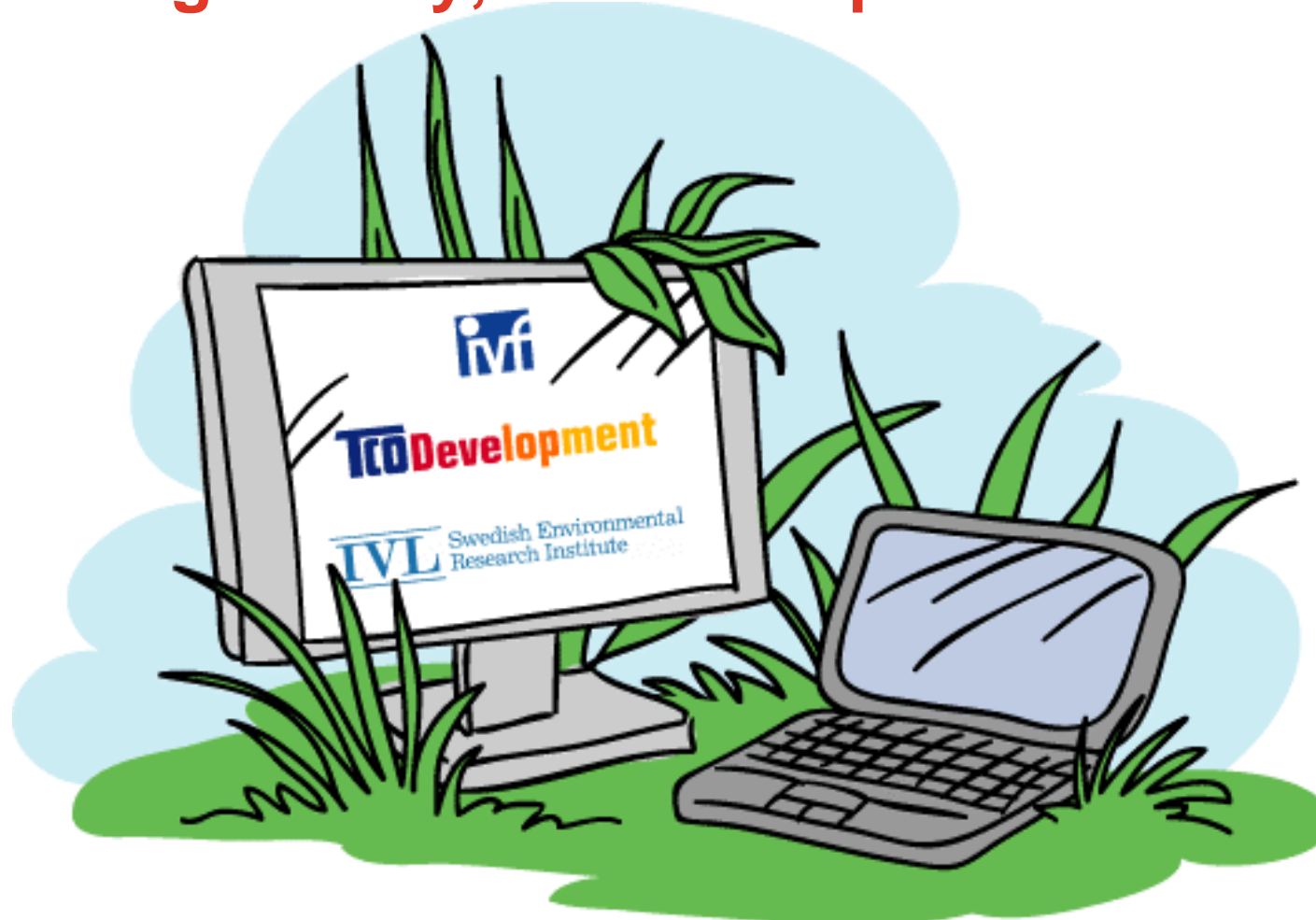


Member of the **swerea** Group

IVF Industrial Research and Development Corporation

www.ivf.se

EuP Ecodesign Study, Lot 3 Computers and Monitors



Anna Karin Jönbrink



Member of the **swerea** Group

IVF Industrial Research and Development Corporation

www.ivf.se

Research results put to practical use

IVF

- further develops and adapts ideas and research results into methods that can be used in practice
- works on site at companies and other clients

IVF has

- competent and skilled staff
- a profound understanding of industry
- ongoing projects at several companies





Member of the **swerea** Group

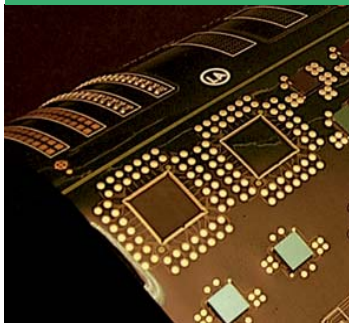
IVF Industrial Research and Development Corporation

www.ivf.se

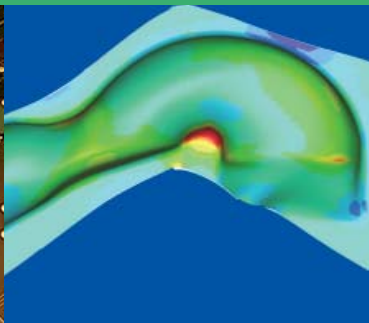
Our working areas

IVF possesses expertise in all the key processes used in manufacturing companies:

Environment and the work environment



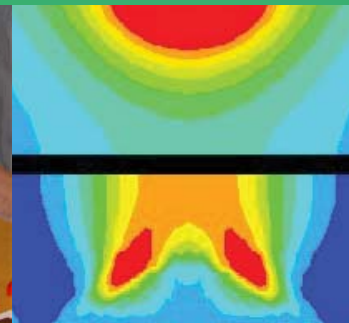
Electronics development



Product development



Production development



Manufacturing processes



The Swedish Ceramics Institute



Member of the **swerea** Group

IVF Industrial Research and Development Corporation

www.ivf.se



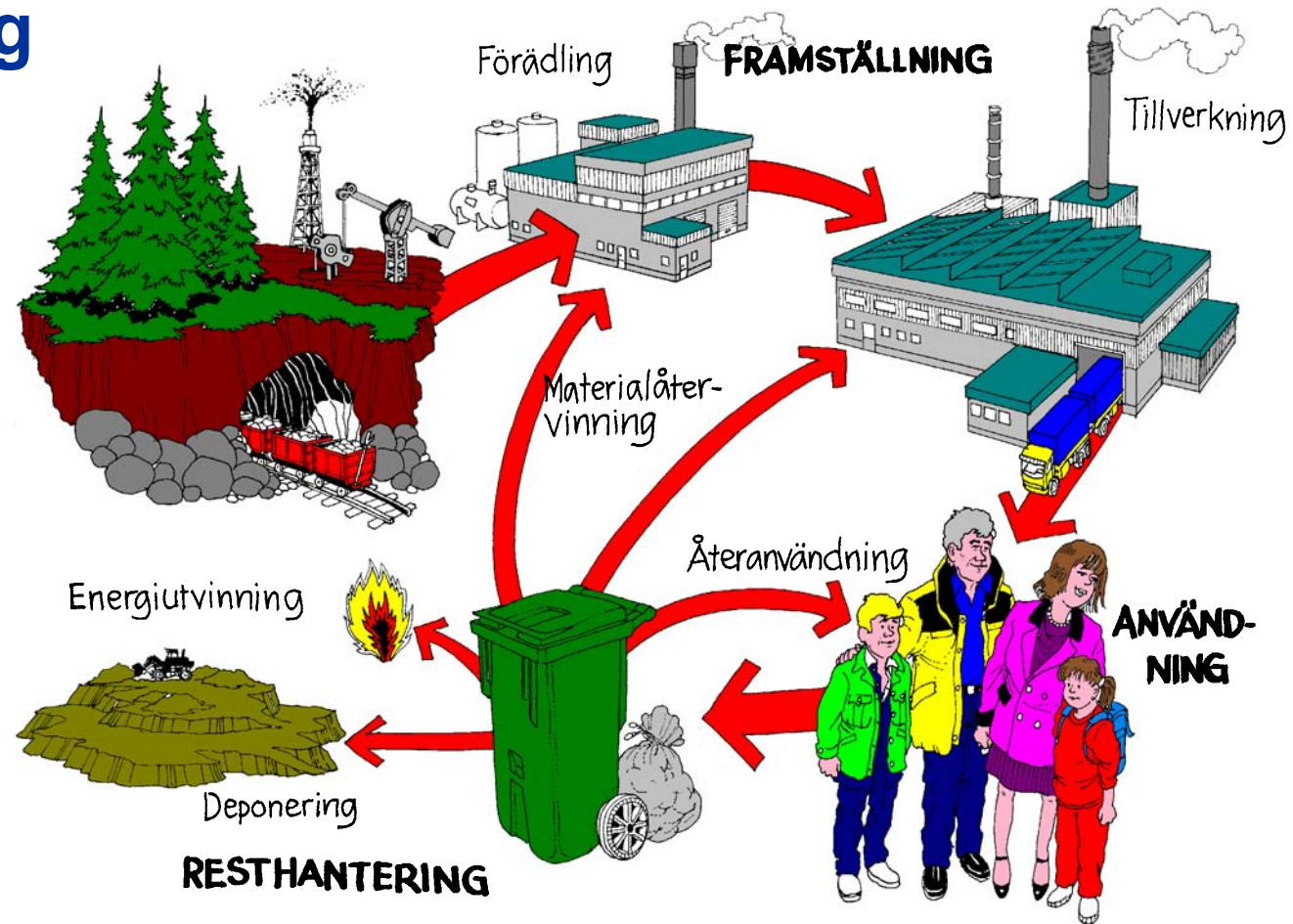
Anna Karin Jönbrink



Anna Karin Jönbrink

Product development
Eco Design
Energy Efficiency

Ecodesign and Life Cycle Thinking





Member of the **swerea** Group

IVF Industrial Research and Development Corporation

www.ivf.se

Product category

- Computers
 - Desktops
 - Laptops
- Monitors
 - LCD
 - (CRT)
- For future products and technologies
 - Possibly other related products

Computers and monitors

- New models quite often
- Environmental impact
 - Materials
 - Production
 - Transports
 - Use
 - End of life
- Can also have a big influence of environmental impact of other products and systems
 - Transport logistics
 - Energy systems
 - ...
- This is a big and complex group of products.
 - focus on the important things (Art. 15, 4. (a) of 2005/32/EC)



Member of the **swerea** Group

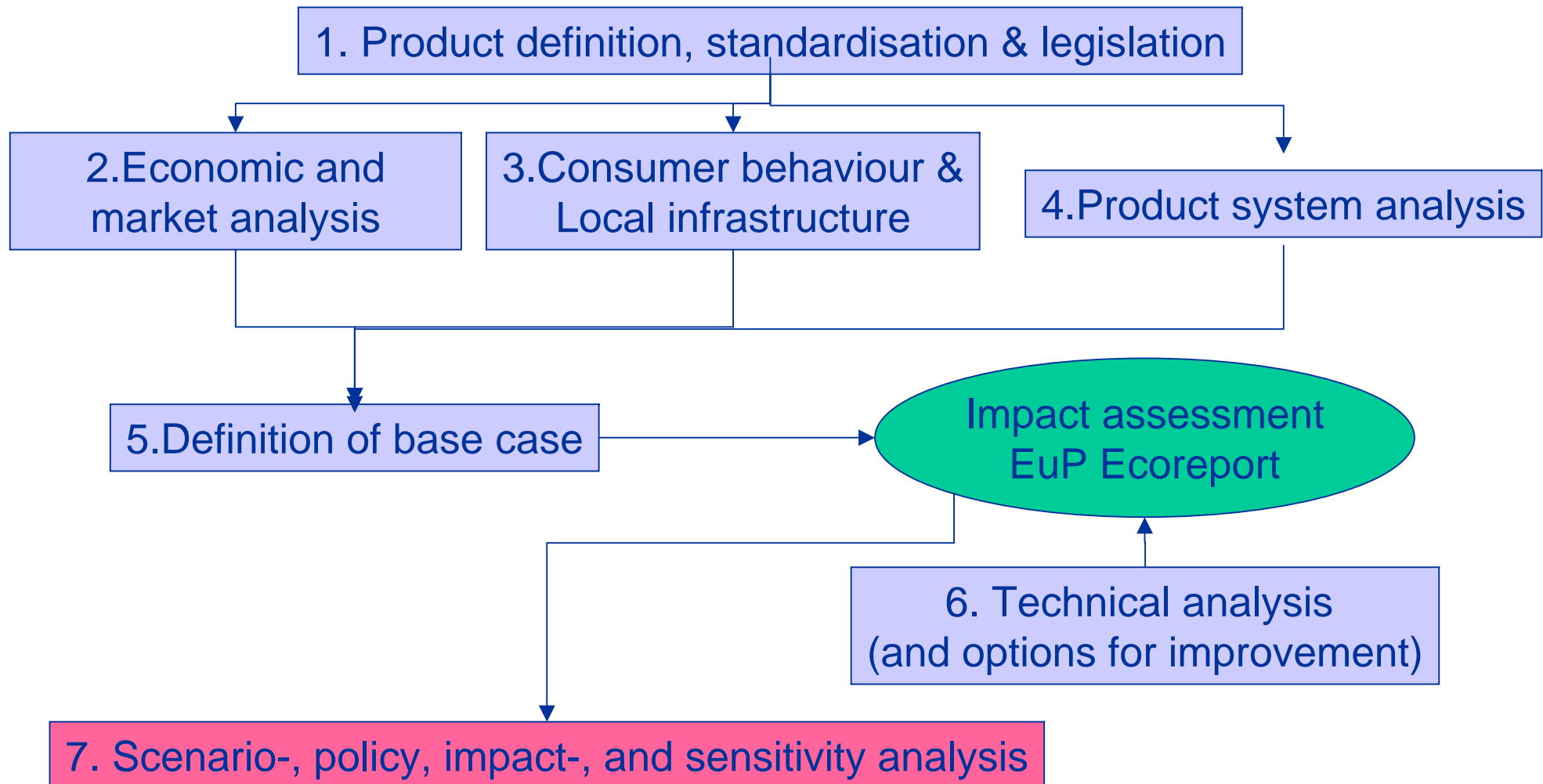
IVF Industrial Research and Development Corporation

www.ivf.se

Methodology

- We will follow the VHK Methodology prescribed

VHK- methodology





Stakeholder involvement

- The study must involve "the right" stakeholders such as
 - Member states
 - IACTA
 - WWF
 - Euro commerce,
 - Orgalime
 - Interested companies
 - ...
- Any stakeholders interested in our study are very welcome to contribute!



Website

- All lots must start up a website for their projects, which will be linked to the overall website at the Commission.
 - http://europa.eu.int/comm/energy/demand/legislation/eco_design_en.htm
- They will reflect the progress of work and give a picture of the project to the stakeholders
- Results from sub-steps (VHK-method) will be published
- Invitations to workshops will be published

- Our website will start up within two weeks at **www.ecocomputer.org**



Workshop

- Every lot may invite the stakeholders to workshops. The workshops must be open to every interested stakeholder.
- Object of the workshop is to give stakeholders opportunities to give their view and to include them in the study and in the final report.



Member of the **swerea** Group

IVF Industrial Research and Development Corporation

www.ivf.se

Lot 3 Workshop

- We will have an open workshop on 30 May 2006 in Gothenburg.
- Main issues
 - Describe our project
 - Give results available at that time
 - Only the first tasks
 - Ask for contribution considering
 - Project
 - Collection of information



Member of the **swerea** Group

IVF Industrial Research and Development Corporation

www.ivf.se

Lot 3 Workshop, continued

- Information we could be asking for
 - Market information
 - Consumer behaviour information
 - Data for the "base case"
 - Trends in the product category
 - Possible new options



Meetings with stakeholders

- There might be a need for more informal discussions with different stakeholders,
 - By phone
 - By e-mail
 - By meetings



Good result from the study

- The better information we can collect in the study, the better calculations can be done, and the better result of the study.
- Our hope is that the study will become a good base, from which the Commission can build their policy means and measures.



Member of the **swerea** Group

IVF Industrial Research and Development Corporation

www.ivf.se

Now

- We are now in the beginning of our work, please let us know if there are things which should be changed to get an even better study
- Send me an e-mail if you (or somebody else) want to be included in my "mailinglist of those interested in EuP"
- anna-karin.jonbrink@ivf.se